



*Artist Impression

Stockholm 333 | Bold Living

 5
  4
  2
  635m²
 333m²

LOT NUMBER

3

PACKAGE EXPIRY

30/06/2026

\$2,318,000*

THIS PACKAGE INCLUDES:

- Hampton façade
- Master suite with large ensuite and WIR
- Ceiling fans and ducted air conditioning with air touch 5
- Butler's pantry with sink
- Overhead rain shower to master ensuite



Please note: *All images are for illustration purposes only. House and land are sold separately and packages are priced with standard inclusions and are correct at time of publication. Urbex is responsible for the sale of the land only; a separate contract is required for the construction of the home. Urbex gives no warranty and accepts no liability as to the accuracy or sufficiency of any description, photography, illustration or statement contained in this brochure. All information provided is subject to change without notice. Purchasers are responsible for House & Land Packages complying with all council regulations, easements, restrictions, covenants, encumbrances and design requirements applying to the land.

Contact Stacey Scrutton for more information
T. 1800 657 724 | E. info@satinwood.com.au



*Artist Impression

Sorrento 444 | Bold Living

5
 4
 2
 604m²
 444m²

LOT NUMBER

4

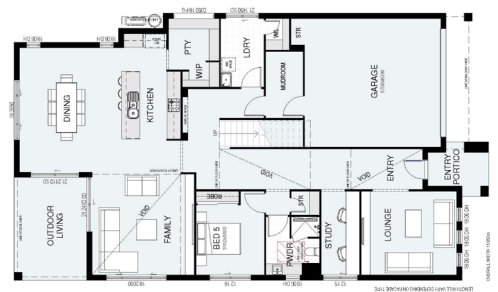
PACKAGE EXPIRY

30/06/2026

\$2,474,000*

THIS PACKAGE INCLUDES:

- Southampton façade
- Open voids above family area and entry hall
- Ceiling fans and ducted air conditioning with air touch 5
- Entertainer's kitchen with butler's pantry
- Overhead rain shower to master ensuite



Please note: *All images are for illustration purposes only. House and land are sold separately and packages are priced with standard inclusions and are correct at time of publication. Urbex is responsible for the sale of the land only; a separate contract is required for the construction of the home. Urbex gives no warranty and accepts no liability as to the accuracy or sufficiency of any description, photography, illustration or statement contained in this brochure. All information provided is subject to change without notice. Purchasers are responsible for House & Land Packages complying with all council regulations, easements, restrictions, covenants, encumbrances and design requirements applying to the land.

Contact Stacey Scrutton for more information
 T. 1800 657 724 | E. info@satinwood.com.au



*Artist Impression

Stockholm 280 | Bold Living

4
 2.5
 2
 734m²
 280m²

LOT NUMBER

7

PACKAGE EXPIRY

30/06/2026

\$2,266,000*

THIS PACKAGE INCLUDES:

- Hampton classic façade
- Upstairs retreat with balcony
- Ceiling fans and ducted air conditioning with air touch 5
- Modern kitchen with butler's pantry
- Overhead rain shower to master ensuite



Please note: *All images are for illustration purposes only. House and land are sold separately and packages are priced with standard inclusions and are correct at time of publication. Urbex is responsible for the sale of the land only; a separate contract is required for the construction of the home. Urbex gives no warranty and accepts no liability as to the accuracy or sufficiency of any description, photography, illustration or statement contained in this brochure. All information provided is subject to change without notice. Purchasers are responsible for House & Land Packages complying with all council regulations, easements, restrictions, covenants, encumbrances and design requirements applying to the land.

Contact Stacey Scrutton for more information
 T. 1800 657 724 | E. info@satinwood.com.au



*Artist Impression

Zeus 363 | Bold Living

5
 3
 2
 957m²
 363m²

LOT NUMBER

9

PACKAGE EXPIRY

30/06/2026

THIS PACKAGE INCLUDES:

- Ultra modern façade
- Ceiling fans and ducted air conditioning with air touch 5
- Upstairs retreat with balcony
- Large outdoor living area
- Butler's pantry with sink
- Overhead rain shower to master ensuite



\$2,479,000*

Please note: *All images are for illustration purposes only. House and land are sold separately and packages are priced with standard inclusions and are correct at time of publication. Urbex is responsible for the sale of the land only; a separate contract is required for the construction of the home. Urbex gives no warranty and accepts no liability as to the accuracy or sufficiency of any description, photography, illustration or statement contained in this brochure. All information provided is subject to change without notice. Purchasers are responsible for House & Land Packages complying with all council regulations, easements, restrictions, covenants, encumbrances and design requirements applying to the land.

Contact Stacey Scrutton for more information
 T. 1800 657 724 | E. info@satinwood.com.au

URBEX *Designed for life*